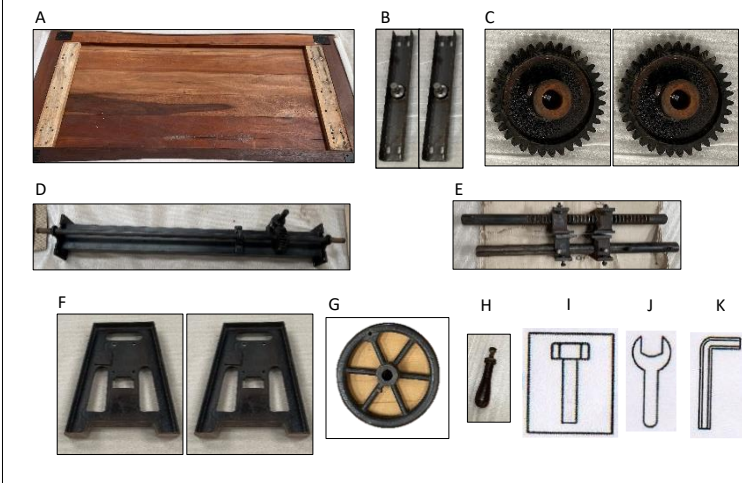


# Assembly Instruction

**KARE**  
DESIGN

81911 – IRON HEAVY DINING TABLE 160 x 80 CM

**PARTS**



**HINTS & TIPS**



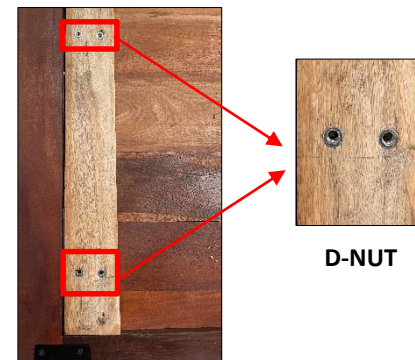
Please retain this Assembly instruction for Future use.



This Assembly Required Two People

Code	Description	Qty
1	Flat washer	08
2	Bolt	08
3	Key	01
4	Spanner	01

**A**



**D-NUT**

**B**



STEP - 01

**I**



STEP - 02

**K**

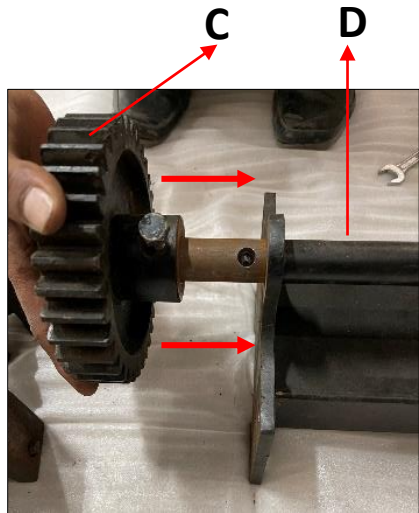


STEP - 03

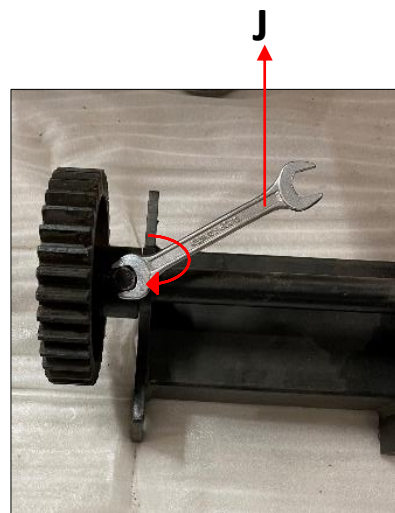


STEP - 04  
TABLE TOP WITH METAL PLATES

# Assembly Instruction



STEP - 05



STEP - 06



STEP - 07



STEP - 08



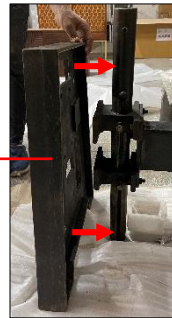
STEP - 09



G

STEP - 10

H



STEP - 11



STEP - 12



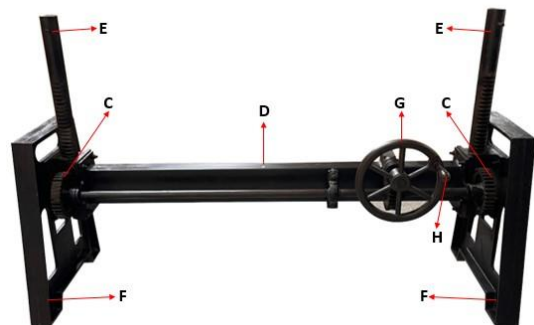
STEP - 13



STEP - 15



FINAL



STEP - 14